

English

  
**conix**  
10 • 10 • 2010



# CONIX® DUO

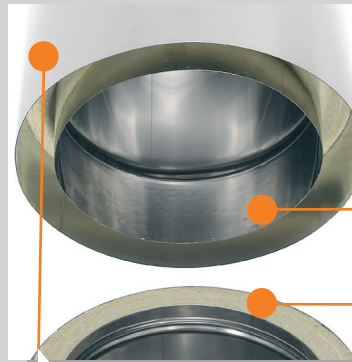
 **Anni**  
bella senza trucco



# CONIX®DUO

CONIX®DUO was designed for fast and easy beautiful installations in full view.

CONIX®DUO resolves any smoke exhaust problem for civil and industrial systems (working temperatures up to 600°C with maximum 1,000°C peaks) and can be used to create chimneys for single flues or grouped flues for forced draught C type equipment or branched grouped flues for natural draught B type equipment.



**1** Internal wall in direct contact with smoke, made of AISI 316L type austenitic stainless steel, laser or Tig welded with certified welding processes.

**2** Intermediate layer acts as insulation, made up of high density (110 kg/m<sup>3</sup>) radiating basaltic rock wool with 25/50 mm thickness and 0.058W/mK conductivity (at 200°C temperature).

**3** External wall designed to protect and encase the insulation, made of AISI 304 type austenitic stainless steel, laser or Tig welded with certified welding processes.

## The 5 benefits of Conix®

- 1** Seal against fumes and condensation
- 2** No silicone gaskets and no risks associated with deterioration of the same
- 3** Better flue draught pressure
- 4** Quick and easy installation
- 5** Universal use

## Conix®, safety at all times

CONIX® is the revolutionary flue system made of stainless steel with conical coupling patented in Europe. It can work in a safe and efficient manner in all conditions, without need for gaskets or clamps on its components, and is quick and easy to install.

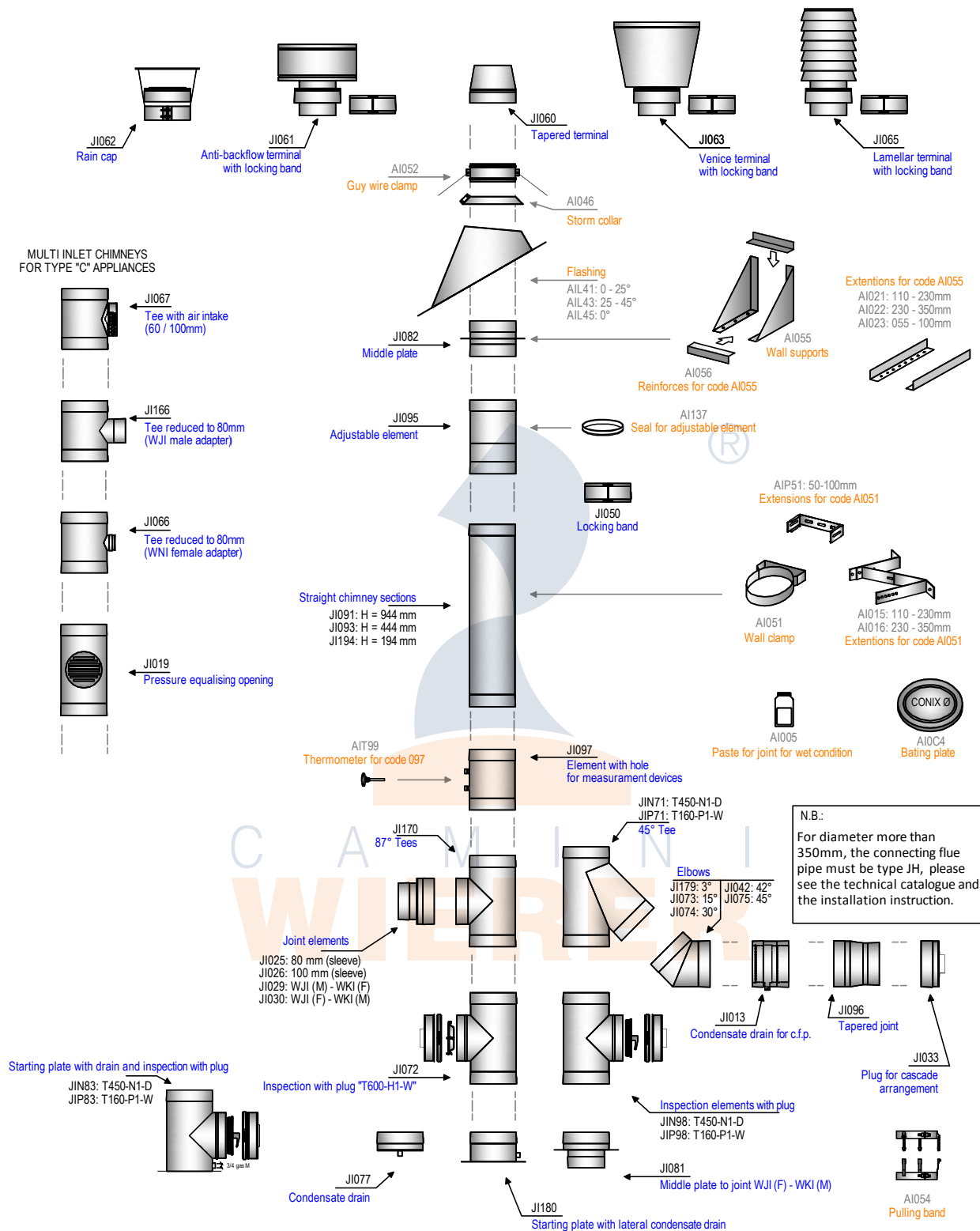
The various parts of the CONIX® System are joined using a simple welding procedure. As no gaskets or clamps are needed, the system can be installed in half the time and with great ease, the pipes in particular.

## Innovation by vocation

The sturdiness, benefits and guaranteed qualities of the new CONIX® system have motivated Camini Wierer to take a bold step: to discard the old system with couplings once and for all. This is a radical decision based on the

total safety and trustworthiness of the product, a strategic aim so important as to now feature on the product logo; and a commercial venture that will see Camini Wierer phasing out silicone gaskets completely by 10.10.2010.

# INSTALLATION OVERVIEW



## Available diameters - internal measurements (mm):

80	100	130	150	180	200	250	300	350
400	450	500	550	600	700	800	900	

## Product ID

## Description of product

**T600-H1-W-V2-L50040-G(75)**



CAMINI WIERER S.p.A. • Via Fontanelle, 5 • 37055 Ronco all'Adige - VERONA • Tel. +39 045 6608333 • Fax +39 045 6608300  
info@caminiwierer.com • [www.caminiwierer.com](http://www.caminiwierer.com)